



In **1910**,
Japan gave the US
a large number of
cherry trees.



Because the trees
were infected with
an exotic disease,
they had to be
destroyed.

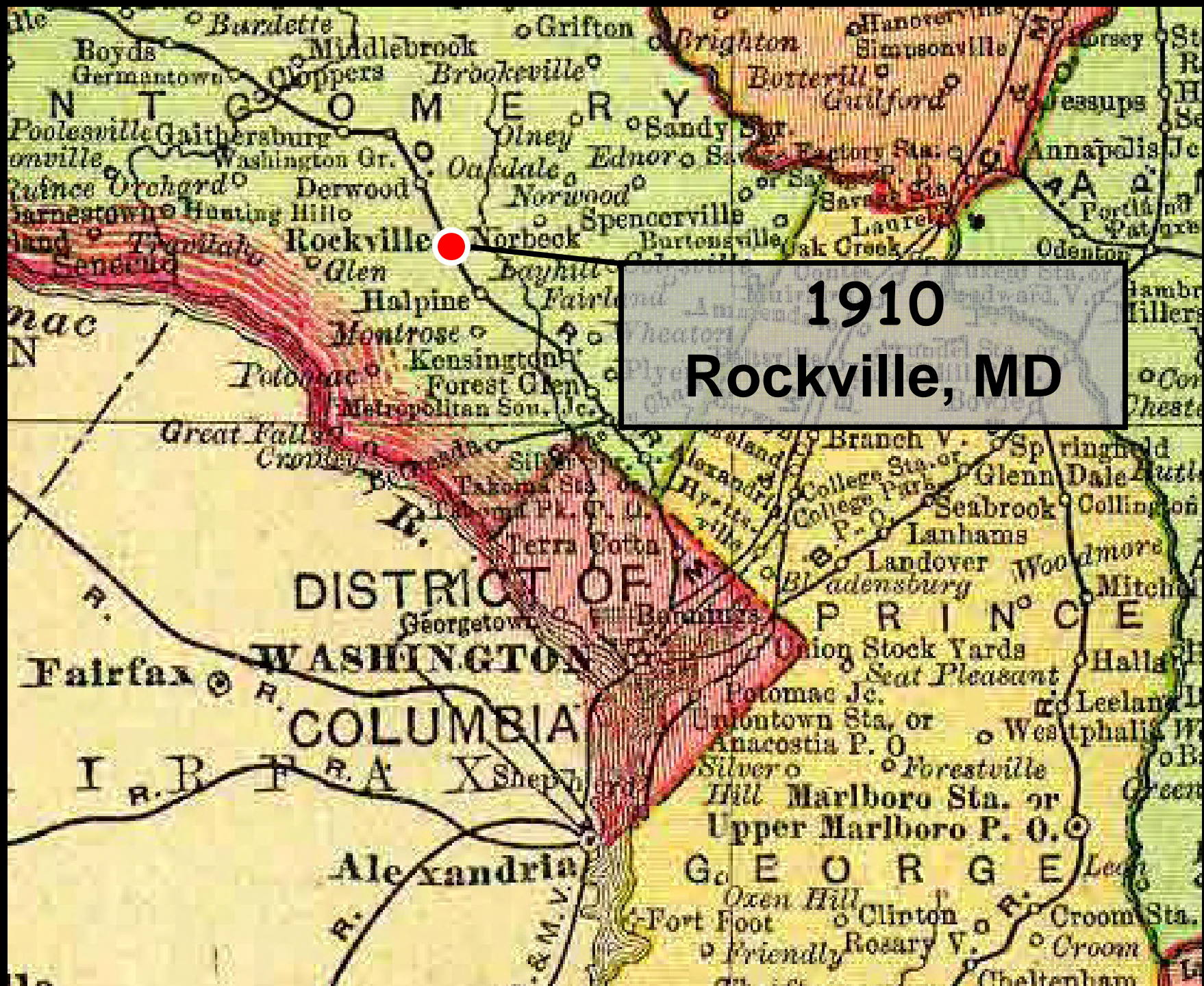
**Diseased cherry
trees helped initiate**

1912 Plant

Quarantine Act

7 U.S.C. 151

**In 1910, Bureau Plant
Industry establishes
1st Plant Quarantine
Facility, Yarrow Plant
Introduction and
Detention Garden, at
Rockville, MD**



1910
Rockville, MD

1910 Yarrow Plant Introduction and Detention Garden



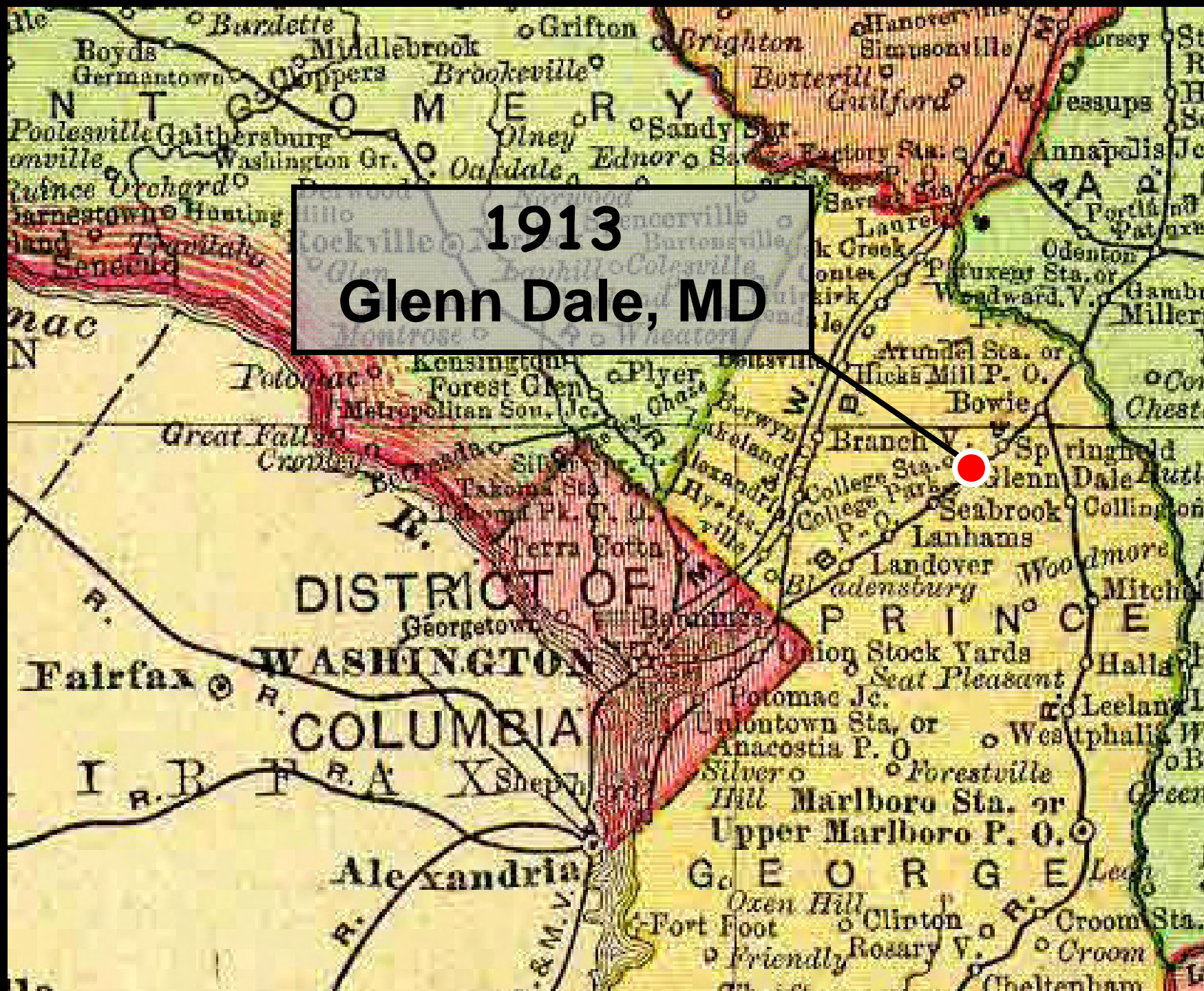


Yarrow Plant Introduction & Detention Garden now Montgomery College



**In 1919, loses lease
on Yarrow Facility
& moves to US
Horticulture Station
in Glenn Dale, MD**

1913
Glenn Dale, MD



1900



**Public picking of
flowers forces
van Fleet to move
research program to
his home in 1913.**

Government's Maryland Station Creates New Roses for America

By THOMAS K. HENKE.

The United States today has a new and beautiful garden. It is the garden of the Government's Maryland Station, where the choice varieties of blooms are produced in Prince Georges County. Just across the District line—Story of Dr. Van Fleet, who devoted his life to the breeding of American roses, so that communities might be made more beautiful—Results of his work are evident today in almost any garden around Washington.

Choice Varieties of Blooms Are Produced in Prince Georges County. Just Across the District Line—Story of Dr. Van Fleet, Who Devoted His Life to the Breeding of American Roses, So That Communities Might Be Made More Beautiful—Results of His Work Are Evident Today in Almost Any Garden Around Washington.



DR. VAN FLEET, NOW IN CHARGE OF THE ROSE BREEDING WORK AT GLENN HALL.

Dr. Van Fleet, now in charge of the rose breeding work at Glenn Hall, is shown in the photograph above.

The United States today has a new and beautiful garden. It is the garden of the Government's Maryland Station, where the choice varieties of blooms are produced in Prince Georges County. Just across the District line—Story of Dr. Van Fleet, who devoted his life to the breeding of American roses, so that communities might be made more beautiful—Results of his work are evident today in almost any garden around Washington.

The United States today has a new and beautiful garden. It is the garden of the Government's Maryland Station, where the choice varieties of blooms are produced in Prince Georges County. Just across the District line—Story of Dr. Van Fleet, who devoted his life to the breeding of American roses, so that communities might be made more beautiful—Results of his work are evident today in almost any garden around Washington.

The United States today has a new and beautiful garden. It is the garden of the Government's Maryland Station, where the choice varieties of blooms are produced in Prince Georges County. Just across the District line—Story of Dr. Van Fleet, who devoted his life to the breeding of American roses, so that communities might be made more beautiful—Results of his work are evident today in almost any garden around Washington.



DR. VAN FLEET.

The United States today has a new and beautiful garden. It is the garden of the Government's Maryland Station, where the choice varieties of blooms are produced in Prince Georges County. Just across the District line—Story of Dr. Van Fleet, who devoted his life to the breeding of American roses, so that communities might be made more beautiful—Results of his work are evident today in almost any garden around Washington.

The United States today has a new and beautiful garden. It is the garden of the Government's Maryland Station, where the choice varieties of blooms are produced in Prince Georges County. Just across the District line—Story of Dr. Van Fleet, who devoted his life to the breeding of American roses, so that communities might be made more beautiful—Results of his work are evident today in almost any garden around Washington.

The United States today has a new and beautiful garden. It is the garden of the Government's Maryland Station, where the choice varieties of blooms are produced in Prince Georges County. Just across the District line—Story of Dr. Van Fleet, who devoted his life to the breeding of American roses, so that communities might be made more beautiful—Results of his work are evident today in almost any garden around Washington.

The United States today has a new and beautiful garden. It is the garden of the Government's Maryland Station, where the choice varieties of blooms are produced in Prince Georges County. Just across the District line—Story of Dr. Van Fleet, who devoted his life to the breeding of American roses, so that communities might be made more beautiful—Results of his work are evident today in almost any garden around Washington.

The United States today has a new and beautiful garden. It is the garden of the Government's Maryland Station, where the choice varieties of blooms are produced in Prince Georges County. Just across the District line—Story of Dr. Van Fleet, who devoted his life to the breeding of American roses, so that communities might be made more beautiful—Results of his work are evident today in almost any garden around Washington.



ONE OF THE UNNAMED VAN FLEET SEEDLINGS, WHICH IS EARLY TO BE INTRODUCED.

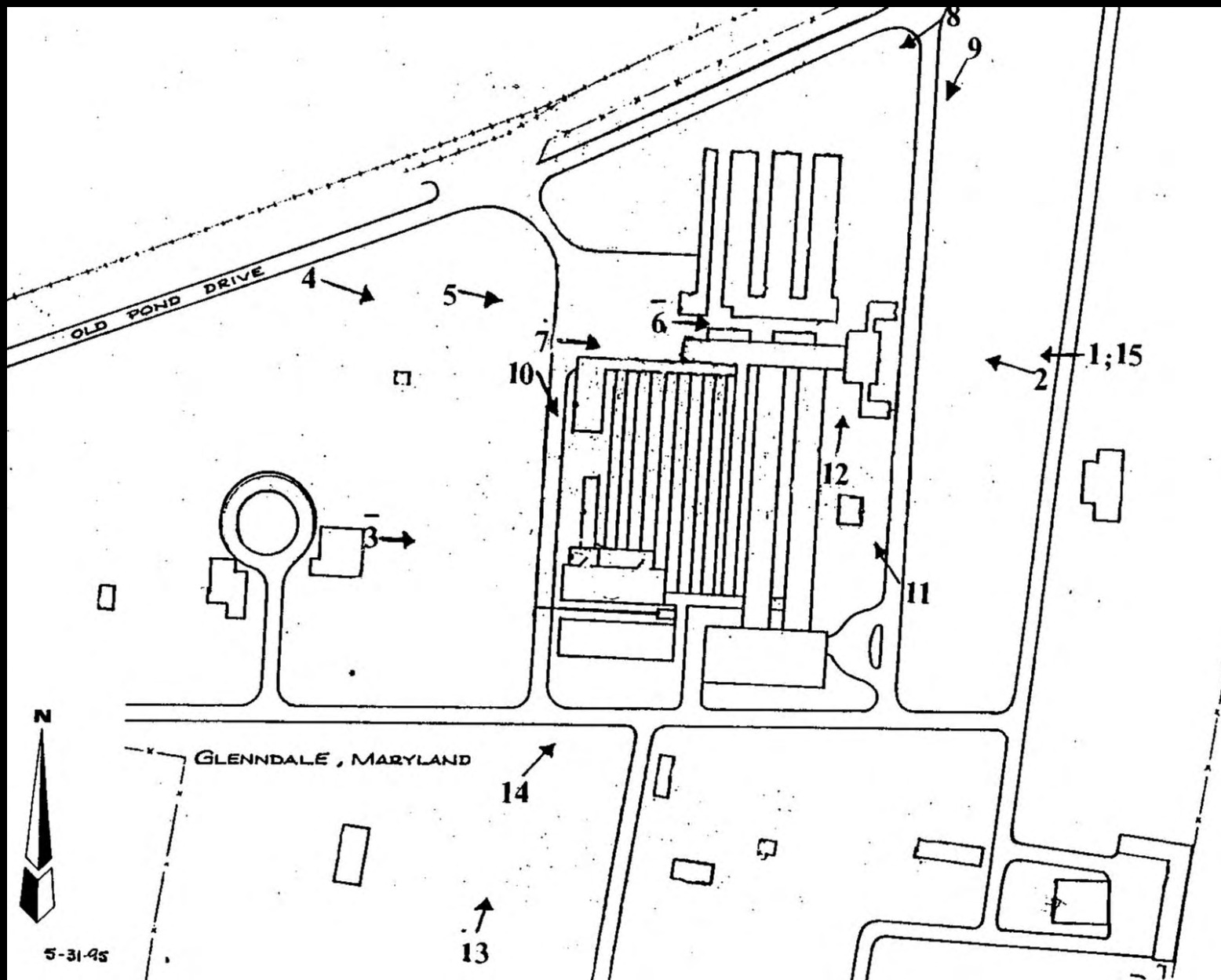


MARTIN BRON (LEFT) ASSOCIATED WITH DR. VAN FLEET AT GLENN HALL, AT WORK IN THE ROSE GARDEN.

The Rambler Tells of Introduction of District Emancipation Bill

The United States today has a new and beautiful garden. It is the garden of the Government's Maryland Station, where the choice varieties of blooms are produced in Prince Georges County. Just across the District line—Story of Dr. Van Fleet, who devoted his life to the breeding of American roses, so that communities might be made more beautiful—Results of his work are evident today in almost any garden around Washington.

1913 U.S. Horticultural Field Station





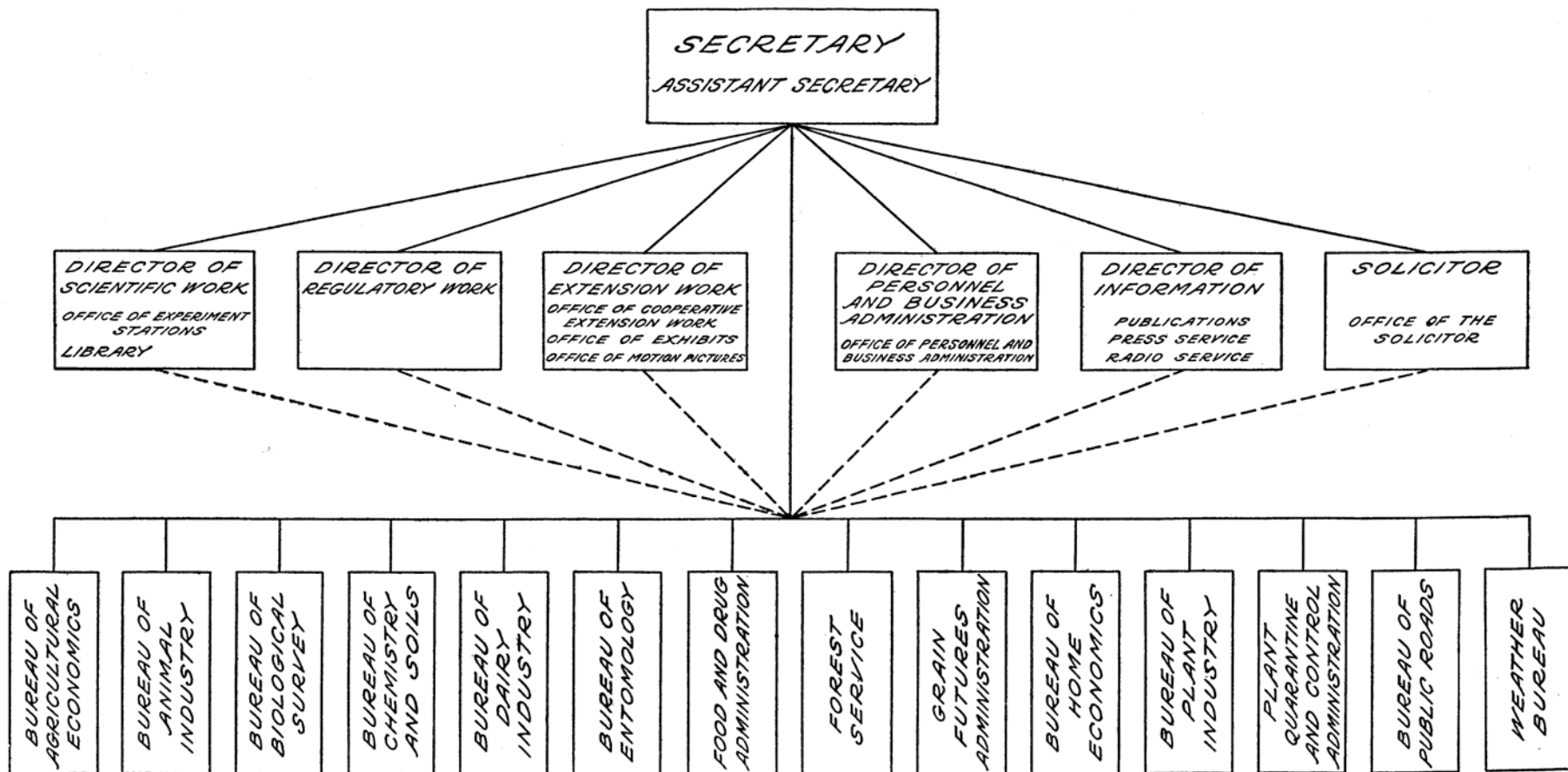






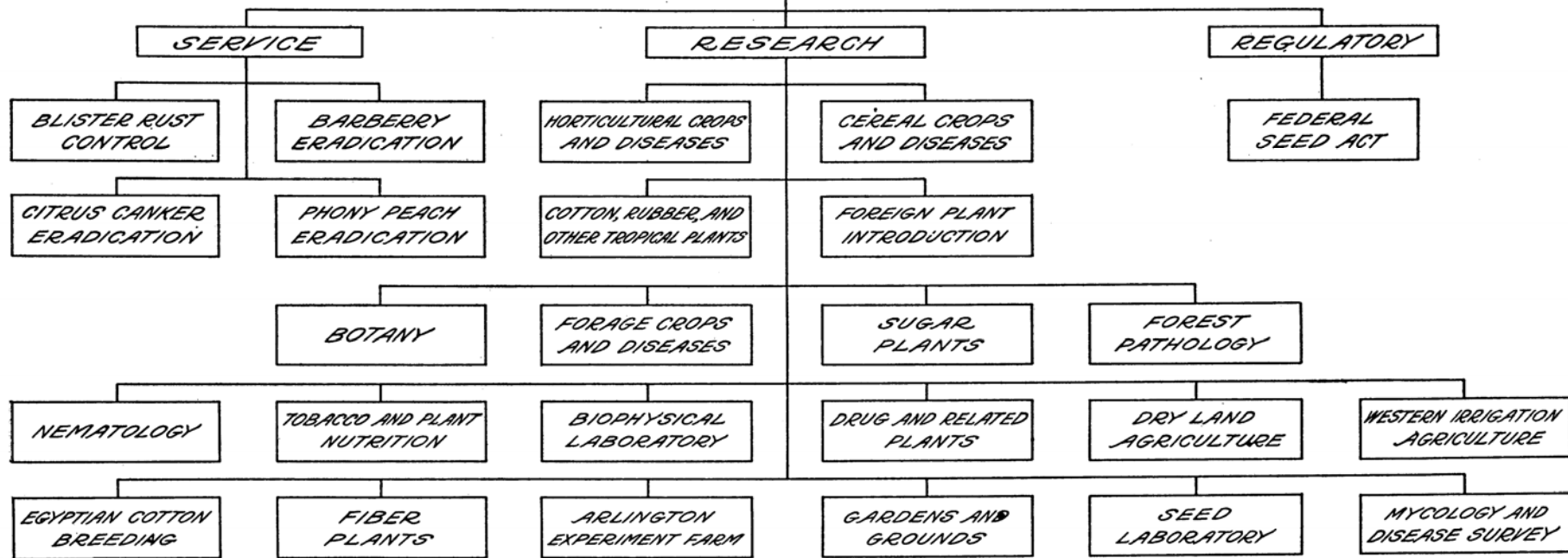
In 1930, most USDA employees directly involved in research

ORGANIZATION OF THE UNITED STATES DEPARTMENT OF AGRICULTURE



BUREAU OF PLANT INDUSTRY

*CHIEF, ASSOCIATE CHIEF, ASSISTANT CHIEF
(ACCOUNTS, FILES, PERSONNEL, PROPERTY,
EXHIBITS, PUBLICATIONS, LIBRARY)*



*FIELD SERVICE
ABOUT 1,400 FIELD EMPLOYEES; 40 FIELD STATIONS; 150 TEMPORARY FIELD LABORATORIES AND EXPERIMENTS, AND COOPERATIVE LABORATORIES AND EXPERIMENTS*



Depression

**USDA expands
& creates new
support programs**

1933 Agricultural Adjustment Act

**1935 Soil Conservation Service
Federal Surplus Commodities Corp.**

1937 Farm Security Adm.

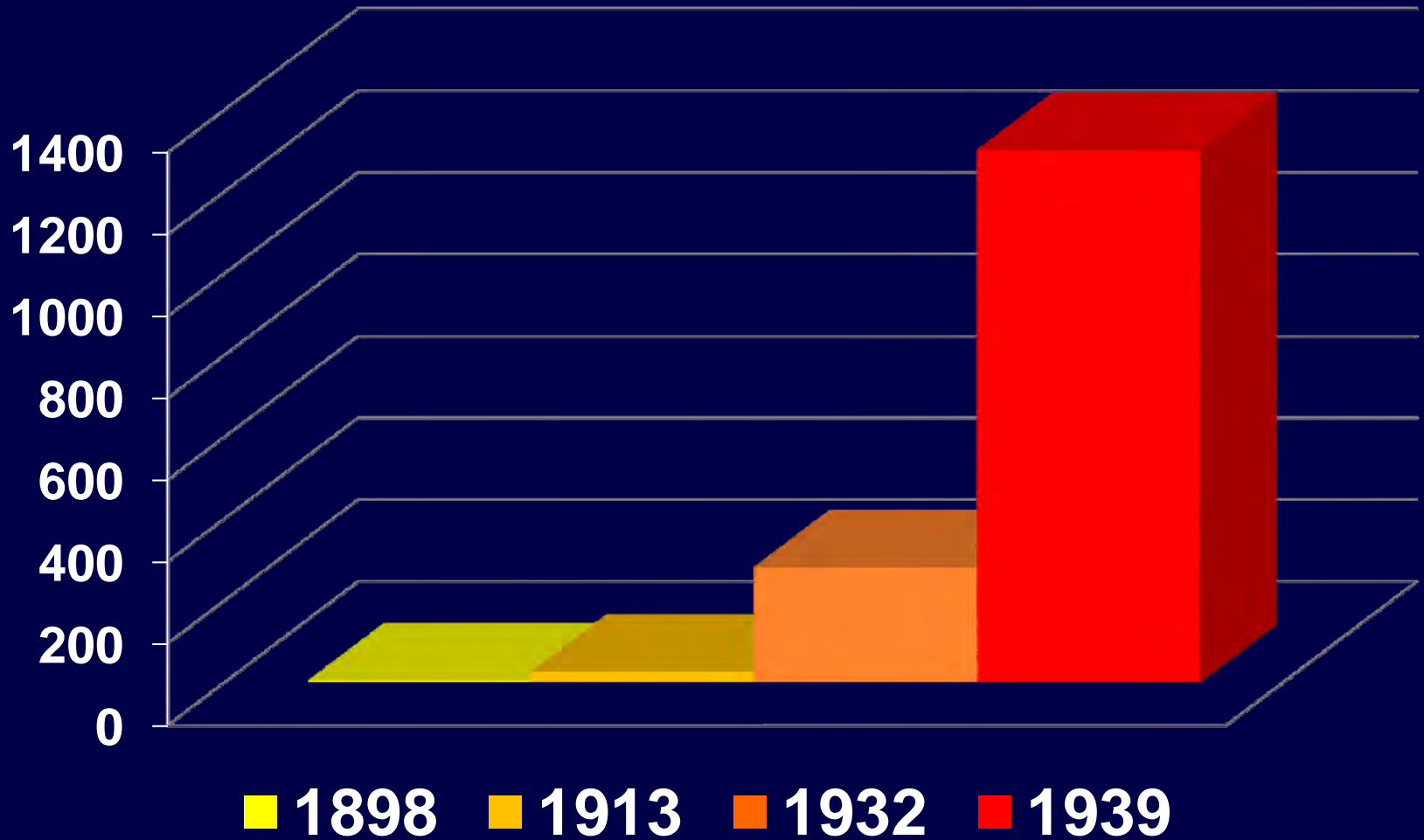
**1938 Federal Crop Insurance Corp.
Agricultural Adjustment Act**

**1939 Rural Electrification Adm.
Farm Credit Adm.
Commodity Credit Corp.**

Increase in support programs mean:

- **larger budget**
- **more employees**
- **need for more space**

USDA Appropriations (\$M)



In **1936**, construction of the “South” Building for office space begins.



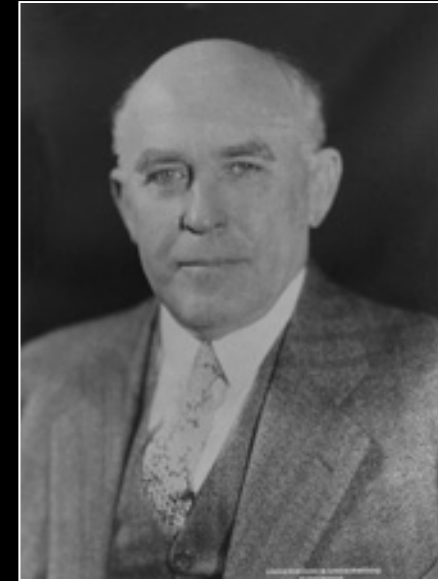
When completed in **1945**, South Building is largest office Building in US.



**Rep.
John Jones**



**Sen.
John Bankhead**



**In 1935,
Bankhead-Jones
Congressional Act
passes and adds
\$20 million to
research budget**

40% of the funds for basic research
60% of the funds distributed to rural
communities

1938

Agricultural Adjustment Act (P.L. 75-430)

The Secretary is hereby authorized and directed to establish, equip, and maintain four regional research laboratories, one in each major farm producing area, and at such laboratories to conduct researches into and to develop new scientific chemical and technical uses and new and extended markets and outlets for farm commodities and products and byproducts thereof.

**Four regional research
laboratories located in:**

Peoria, IL

Albany, CA

Wyndmoor, PA

New Orleans, LA